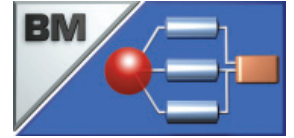


BatchMan® at Schwarzkopf Professional The Innovation in the range of JobScheduling



The role of the pioneer

Schwarzkopf Professional is an affiliated company of Henkel KGaA in Düsseldorf and specialises in the production of highquality hair products for professional hairdressers.

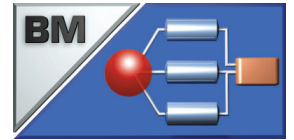
The company headquarters for the research and administration divisions are based in Hamburg, while the site for the production and shipment around the globe (South America, Australia, New Zealand etc.) is located in Wassertrüdingen.

The data processing profile of Schwarzkopf Professional encompasses the following hardware components: HP server T500 7 ESS, one Oracle database with approx. 380 GB and UNIX databases with approx. 80 GB. The LAN consists of a token ring network/Ethernet with approx. 300 workstation PCs and a corresponding number of departmental printers. The software components consist of an SAP R/3 system that runs on UNIX with the FI, AM, MM, SD, CO modules as well as Novell for LAN operation..

The difficult task

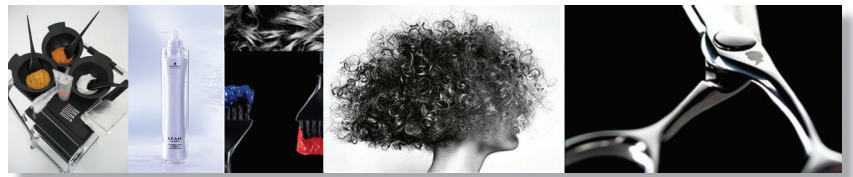
During the system changeover in 1996 from SAP R/2 to SAP R/3, Schwarzkopf Professional realised at an early stage that SAP R/3 did not incorporate any advanced job control systems. The high pressure to cut costs, reduced staffing levels and the multitude of batch jobs (long-lead time processing) with different run times on the servers, in addition to the time windows for specific applications constituted just a few of the reasons why a technical solution had to be found as soon as possible.

BatchMan® at Schwarzkopf Professional The Innovation in the range of JobScheduling



The strong partner

Schwarzkopf Professional thus decided to commission a company that specialised in this field with the development of a 100% ABAP-based job control system that could be fully integrated into SAP R/3. In May 1996, the finished product, which met all the set requirements, namely today's BatchMan (job management under SAP R/3), was taken into production. One of the core requirements of Schwarzkopf Professional involved clearly mapping the complex network structures on the basis of process charts and to plan jobs, job steps and networks in such a way that would permit both time- and quantity-based automatic process monitoring.



The break - through

Once the system was up and running in production, which in turn gave rise to the new opportunity of parallel operation, jobs with long lead times, for example, were reduced from the then 48 hours to less than 4 hours. For maintenance and monitoring on workdays, BatchMan requires around 60 minutes and manages current job networks with up to 300 jobs to the complete satisfaction of Schwarzkopf Professional.